

AN ANIMATED OR RELAXING VISIT!



A short hike in the middle-altitude mountain environment, self guided tour, 2 to 3 hours.

Many benches and sun loungers are set along the path. The mountain airfield also boasts a large flat field to relax on.

At all times during the season : exhibition halls and video projections, souvenir shop, fun and educational activities, guided tour in 4 languages on your smartphone.

July-August, free daily events on animals and the mountain.

☺ Enrich your visit with the Little Guide, a booklet with lots of information and a treasure hunt to do in the park (€5).



RESTAURANT OR PICNIC?

The Balcon de Merlet restaurant boasts one of the most beautiful terraces in the valley and proposes traditional dishes with regional specialities, prices from €15 to €22, kids menu available.

Restaurant information: +33(0)6 07 87 81 76

Picnics can be enjoyed at our friendly dedicated picnic area, outside the park.

Zero waste challenge 🍷 : plan to bring your waste down.



SUMMER 2023

Opening

- **May, June and September:**

every day except Monday - 10 am to 6 pm

- **July, August:**

every day - 9.30 am to 7.30 pm

Entrance fee:

- Adults : €8.50

- Children (4 to 15 year olds) : €5.50

Papoose preferred to pushchairs, dogs and picnics forbidden inside the park, water is not suitable to drink.



RESERVATION REQUIRED

For the comfort of your visit during busy periods, reserve your entry time to the park. **Reservation MUST BE MADE:**

- **On weekends and public holidays in May, June and September**

- **Every day in July and August**

Reservations are open 7 days in advance to the day of your visit, depending on availability. Easy and free on www.parcdeemerlet.com.

ACCESS MAP

Reach Merlet on foot!

Enjoy a discount by undertaking the 500 m climb from

Les Houches (station) or from Chamonix (Bossons station).

Free Shuttle !

Runs during the high season : parcdeemerlet.com



WINTER INFORMATION

December to March, guided tours upon reservation.

An unforgettable and privileged day in a small group with a guide in a middle-altitude mountain environment.



CONTACT US

+33 (0)7 67 22 82 69
www.parcdeemerlet.com

2495, Chemin de Merlet
74 310 Les Houches

MORE THAN A WILDLIFE PARK, A TRULY EXCEPTIONAL SITE!



Welcome to Merlet mountain animal park!
Activities on offer include:

An easy going hike,
a unique panorama of the Mont-Blanc massif,
a vast area where animals live free amongst the forest and meadows, traditional chalets,
a rare proximity with wild animals...

Enjoy an exciting immersion in our park!

Reservation required



VISIT MERLET WILDLIFE PARK

- 1 Reception Entrance/Exit
- 2 Picnic area
- 3 Bar Restaurant Souvenirs shop
- 4 WC - Dry ecological toilets
- 5 Events and animations corner
- 6 Exhibitions and videos
- 7 Traditional Mazot
- 8 Silent zone

- 'Easy' Trail
(push chair access)
About 1h
- 'Good Condition' Trail
About 2h
- Fun/educational activity
- Orientation table



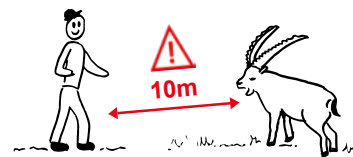
SELF-GUIDED TOUR ON
www.parcdermerlet.com

FOR YOUR SAFETY

Restez sur les sentiers.
Restez calme et silencieux.
Pour la santé des animaux ne
leur donnez aucune nourriture.
Parents, surveillez vos enfants.
Ne jetez pas de cailloux.

Restate sui sentieri.
Restate calmi e silenziosi.
Per la salute degli animali
non date nessun cibo.
Sorvegliate i vostri bambini.
Non gettare sassi.

Please stay on the trails.
Remain calm and quiet.
For the animals' health please do
not feed them.
Parents, keep an eye on your children.
Do not throw stones.



IBEX

King of the high mountain environment, the ibex live at an altitude of up to 3000 m. Thanks to their hooves that are as supple as climbing shoes they are comfortable on rocky terrain and steep cliffs!



SIKA DEER

Native to Japan, Sika is a small friendly deer. Its coat is spotted in the summer and turns brown in winter. The female is called a doe.



LAMA

This domestic animal is originally from the Andes Mountains. It famously spits when it feels threatened.



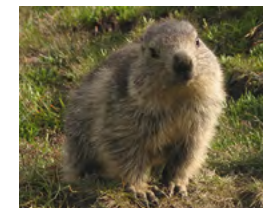
MOUFLON

Mouflons are mountain sheep that come from Corsica. These shy animals are perfectly adapted to middle-altitude mountain and always live in herds. The males bear spiral-shaped horns.



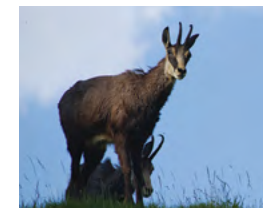
MARMOT

This furry rodent of the Alpine grassy meadows is not as cute as you might think. They sleep 6 months through the winter and more than 12 hours a day in the summer!



CHAMOIS

The king of speed! The antelope of the mountains. Their hooves spread out when they run in the snow acting as real snowshoes! Both males and females have horns.



FALLOW DEER

Fallow deer are European animals that are hardly found in the wild today. Males grow palmate antlers that they shed each year. The female of the deer is the doe.

